



Betty Frances Spence

January 31, 1934 - August 17, 2013

Betty Frances Spence, 79, widow of Clifford Spence, passed away on Saturday, August 17, 2013 at Emeritus in Greenville.

Born in Greenville, she was the daughter of the late William and Beulah Hunt Staton.

Surviving are two daughters: Reta Garner (Edgar) and Susan Kates (Dennis); one son: Clifford Alan Spence (Diane); eight grandchildren, twenty-one great-grandchildren, and four great-great-grandchildren.

Along with her parents she was predeceased by three brothers.

The family will receive friends Tuesday afternoon from 1 until 2:00 p.m. at The Howze Mortuary.

Funeral services will be Tuesday afternoon at 2 p.m. at The Howze Mortuary Chapel.

Online condolences may be expressed to the family at www.thehowzemortuary.com.

The Howze Mortuary, Travelers Rest is in charge of the arrangements. (864)

834-8051.

Previous Events

Visitation

AUG **20**. 1:00 PM - 2:00 PM (ET)

The Howze Mortuary
6714 State Park Rd./P.O. Box 369
Travelers Rest, SC

Service

AUG **20**. 2:00 PM (ET)

The Howze Mortuary Chapel
6714 State Park Rd./P.O. Box 369
Travelers Rest, SC

Tribute Wall

Donna
Waldrop

“ *Thoughts and prayers for all of you during this time. We love you.*
Donna, Gary and Nicholas Waldrop



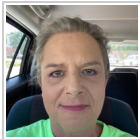
Donna Waldrop - August 20, 2013 at 08:35 AM

SF

“ *Steve Barnell & Family lit a candle in memory of Betty Frances Spence*



Steve Barnell & Family - August 20, 2013 at 07:30 AM



“ *Alan, my thoughts and prayers are with you and your family.*



Leah Boyce - August 18, 2013 at 12:41 PM